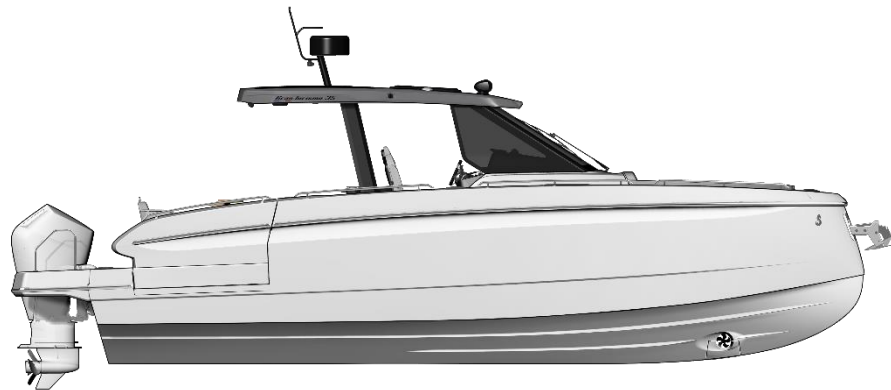


Bican Turismo 35

Overall length / Longueur hors tout	11,20m	36'9"
Hull length / Longueur coque	9,78m	32'1"
Overall beam / Largeur coque	3,24m	10'8"
Overall beam + open side terraces / Largeur de coque + terrasses latérales ouvertes	4,65m	15'3"
Air draft / Tirant d'air*	4,26m	13'12"
Draught / Tirant d'eau	1,09m	3'7"
Light displacement / Déplacement léger CE	5,336 kg	11 761 lbs
Fuel capacity / Capacité carburant	2 x 370 L	2 x 98 US GAL
Freshwater capacity / Capacité eau douce	160 L	42 US GAL
Hot water heater capacity / Capacité chauffe-eau	25 L	7 US GAL
Accommodation / Couchages	2	
Category EC / Catégorie CE	B8 / C10	
Max engine power / Puissance moteur max	2 x 350 CV / HP	
Naval Architect / Architecte naval	BENETEAU / MICHAEL PETERS YACHT DESIGN	
Design	ANDREANI DESIGN	

*inclus support radar / included radar support



Profil - OB



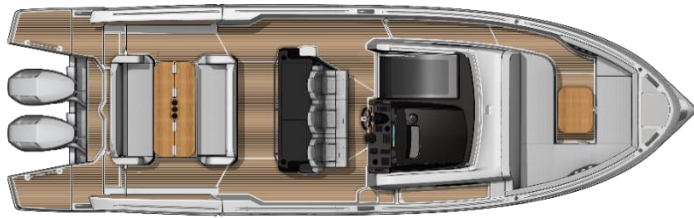
Hard top - Standard



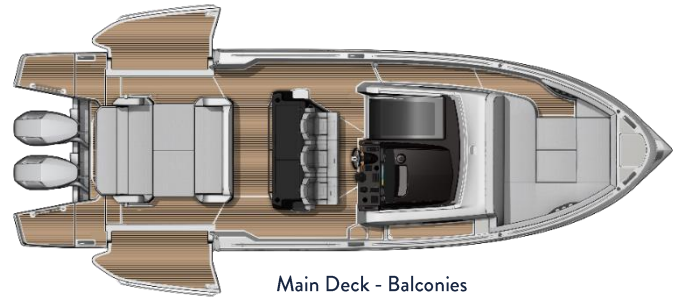
Hard top - Solar panels



Alan Turismo 35



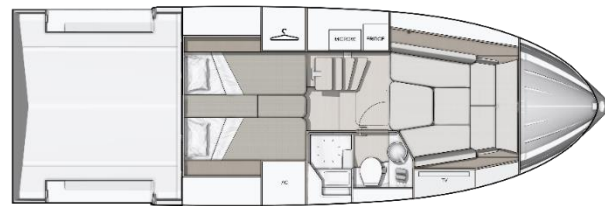
Main Deck



Main Deck - Balconies



Lower deck – Salon



Lower deck – Cabin

ENGLISH / Standard Equipment

DECK EQUIPMENT

- Courtesy lighting in the cockpit
- Black navigation lights

MOORING ANCHORING

- 2 front, 2 centre and 2 rear aluminium/titanium cleats

COCKPIT

- Solid wood folding cockpit table on 2 electric telescopic legs, with 3 cup holders + 1 handrail + protective cover
- Forward bench seat with swivel backrest and armrests + protective cover
- Aft cockpit bench seat with folding backrest for conversion into sunbathing area + protective cover
- Sunbathing mattress in chosen upholstery
- Storage compartment for BIB (under forward bench seat)
- 1 storage locker (under aft bench seat)
- Access hatch to technical hold
- 2 Side decks with electrically assisted opening and handrails
- 2 safety gates
- 2 aft side platforms (0,91 x 0,67m / 3' x 2'2") with 2 handrails and folding bathing ladder on port side
- 1 cross step basin

HARD-TOP

- Grey hard top with manual sunroof
- Black radar bracket
- Black aluminium hard top base LED lighting
- Anthracite grey padded ceilings
- 2 rear spotlights
- LED front spotlight
- 2 LED rear spotlights
- White Mercury GPS antenna

FRONT DECK

- U-shaped salon + 6 cup holders + protective cover
- Removable wooden table
- Sunbathing mattress according to chosen upholstery
- Starboard hatch under forward starboard seat for gas box
- Access to anchor locker under forward seat
- Anchor locker with dedicated space for fenders

PILOT STATION

- Pilot console with engine controls, 2 handrails, compass, 1 USB/A/C socket, 2 cupholders and pocket
- Black PMMA console panel with black cap
- Glass front windscreen with 1 integrated electric wiper
- Glass side windows with black frame
- Pilot bench seat 3 fixed seats with Bolster function matching exterior upholstery + 1 cupholder
- 2 spaces under bench seat for fire extinguisher (not supplied)
- Leather steering wheel
- Footrest for wooden pilot seat
- Wooden folding pedestal
- 1 Mercury Vessel View (704) engine screen
- 1 induction charger

Access to lower deck

- Steps on stainless steel structure with backlighting
- 1 grey leather-covered handrail
- 1 niche with bottle storage
- 1 opening deck hatch with blackout curtain
- 1 space for microwave (optional)
- 1 space for fridge (optional)

SALON / CABIN (FRONT)

- Salon convertible into double bed (2,10m x 1,40m min – 1,65m max / 6'9" x 4'6" - min 5'4" max)
- Wood foldable table on telescopic leg
- Storage and technical access under seats and backrests
- Shelves
- 2 USB sockets
- 1 panoramic window with opening porthole and blackout curtain
- 1 mirror on access door to head
- Direct and indirect lighting

