

13.3 m 2002 Grand Soleil 43

€110,000 Tax: Paid, Italy

Sanremo, Italy



## Boat Details

Make:	<b>Grand Soleil</b>	Hull Material:	<b>Fiberglass</b>	Max Draft:	<b>2 m 30 cm</b>
Model:	<b>43</b>	Drive Type:	<b>Sail Drive</b>		
Year:	<b>2002</b>	Beam:	<b>4 m 2 cm</b>		
Length:	<b>13 m 39 cm</b>	Boat Location:	<b>Sanremo, Italy</b>		
Price:	<b>€110,000</b>	Guest Cabins:	<b>3</b>		
Condition:	<b>Used</b>	Guest Heads:	<b>2</b>		
Class:	<b>Racer/Cruiser</b>	Fuel Type:	<b>Diesel</b>		



**Cora Bongiovanni | Sailing2B**

Marina degli Aregai - Via Cozzi, 1, Santo Stefano al Mare (IM), Italy

Tel: **+39 335 802 4006**

info@sailing2b.it

<https://www.sailing2b.it/>

## Description

Grand Soleil 43 del 2002, uno splendido sloop realizzato dal prestigioso Cantiere del Pardo costruita dal 1998 al 2004, per coniugare confort e prestazioni. I 60 esemplari costruiti riflettono tutte le caratteristiche che hanno reso famoso il cantiere. Scafo dalle linee filanti, costruito in robusta vetroresina, un piano velico importante che rende la navigazione divertente anche con ariette leggere tipiche dell'estate in Mediterraneo . L'armatore che cerca il Grand Soleil 43 cerca prestazione e robustezza, divertimento e confort.

Questa unità in particolare, secondo proprietario, mai fatto charter, è equipaggiata con motore entrobordo diesel Yanmar 56 Hp, scafo blu navy, coperta e pozzetto in teak ( in ottimo stato), gli interni in legno massello impeccabili, layout studiato con grande cura degli spazi per ottimizzare la vita a bordo, rendendo questa barca perfetta sia per brevi uscite giornaliere, che per crociere prolungate.

## Information & Features

### 2002 Yanmar 4JH3CE (Engine 1)

Engine Type:	<b>Inboard</b>	Drive Type:	<b>Sail Drive</b>	Propeller Material:	<b>Other</b>
Fuel Type:	<b>Diesel</b>	Power:	<b>56 hp</b>		
Engine Hours:	<b>2500</b>	Propeller Type:	<b>3 Blade</b>		

### Dimensions

LOA:	<b>13 m 36 cm</b>	Min Draft:	<b>2 m 30 cm</b>
LWL:	<b>10 m 95 cm</b>	Max Draft:	<b>2 m 30 cm</b>
Beam:	<b>4 m 2 cm</b>		

### Weights

Ballast:	<b>3,000 kg</b>
Displacement:	<b>8,500 kg</b>

### Sail Areas

Total:	<b>101 sqm</b>
Mainsail:	<b>45 sqm</b>
Headsail:	<b>56 sqm</b>

### Speed

Cruising Speed:	<b>7 kn</b>
-----------------	-------------

### Seating

Seating Capacity:	<b>8</b>
Max Passengers:	<b>10</b>
Liferaft Capacity:	<b>8</b>

### Tanks

Fuel:	<b>1 x 160 l</b>
Fresh Water:	<b>1 x 400 l</b>

## Accommodations

Guest Cabins: **3**

Guest Heads: **2**

## Other

Warranty: **None**

Hull Shape: **Monohull**

Fractional Shares: **1**

Flag Of Registry: **Italy**

Designer: **J & J**

Builder: **Cantiere del Pardo**

## Electronics

- AIS
- Autopilot
- Cockpit Speakers
- Compass
- Depthsounder
- Flat Screen TV
- GPS
- Log-Speedometer
- Plotter
- Radio
- VHF

## Inside Equipment

- Electric Bilge Pump
- Hot Water
- Manual Bilge Pump
- Marine Head
- Oven
- Refrigerator

## Outside Equipment/Extras

- Cockpit Cushions
- Cockpit Shower
- Cockpit Table
- Liferaft
- Outboard Engine Brackets
- Swimming Ladder
- Teak Sidedecks
- Tender

## Covers

- Cockpit Cover
- Lazy Bag
- Lazyjacks
- Spray Hood

## Disclaimer

The boat's data sheet has been completed and checked by the owner

The Company publishes the details of this vessel in good faith and cannot therefore endorse or guarantee the accuracy of such information

### PRICE NOTES:

Asking 110,000 VAT paid + agency fees

Agency fees in Italy are paid by both the seller and the buyer

## Additional Information

Excellent maintenance, attentive and constant in all details, engine, tank cleaning, sea inlets, hull, systems, Dacron sails, everything perfectly functional, boat ready to sail

Dacron sails + Code 0 and staysail on furler, all 2020. PVC water tanks, one at the bow and one at the stern, cleaned and inspected every year with a dedicated camera, stainless steel fuel tank, also emptied and inspected 2025, 3-blade fixed propeller (if desired, not included in the price a Max Prop with variable pitch)

2025. Last anti-fouling and complete service 04.2025

2025 New rudder fittings, bushings 2022

2025. Two sea inlets

2025 June RINA safety certificate renewed, replacement of new flares

2025 Raymarine ST60 instrument replaced display

2024 AIS Raymarine A/B.

2024 Epirb 2024

2024 electric winch

2024 riser disassembled and cleaned

2024 replacement of sail-drive shaft

2023 replacement of all batteries

2022 new sail drive gasket

2022 autoclave no. 2, one of which is new 2022



Interior of 2002 Grand Soleil 43 yacht with wooden cabinetry and seating.



Cozy cabin interior of 2002 Grand Soleil 43 sailboat with wooden finish and bedding.



Kitchen area of 2002 Grand Soleil 43 yacht with stove and storage.



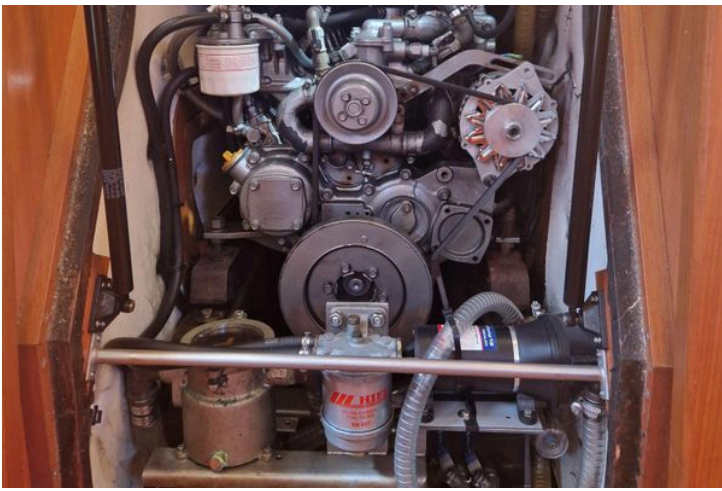
Cozy cabin interior of 2002 Grand Soleil 43 sailboat with blue bedding.



Grand Soleil 43 yacht bathroom with wooden cabinetry, toilet, and sink, 2002 model.



Interior view of a 2002 Grand Soleil 43 yacht's wooden paneling and plumbing system.



Engine compartment of a 2002 Grand Soleil 43 sailboat, showcasing mechanical components.



Cockpit of 2002 Grand Soleil 43 sailboat with wooden deck and steering wheel.



Raymarine navigation instruments on a 2002 Grand Soleil 43 yacht dashboard.



Grand Soleil 43 sailboat deck, 2002 model, docked at marina with clear blue sky.



Close-up of a mechanical component on a 2002 Grand Soleil 43 sailboat.



Grand Soleil 43 sailboat, 2002 model, docked with sails furled, clear blue sky background.



Bow of 2002 Grand Soleil 43 yacht docked at marina.



Anchor chain compartment on a 2002 Grand Soleil 43 sailboat deck.